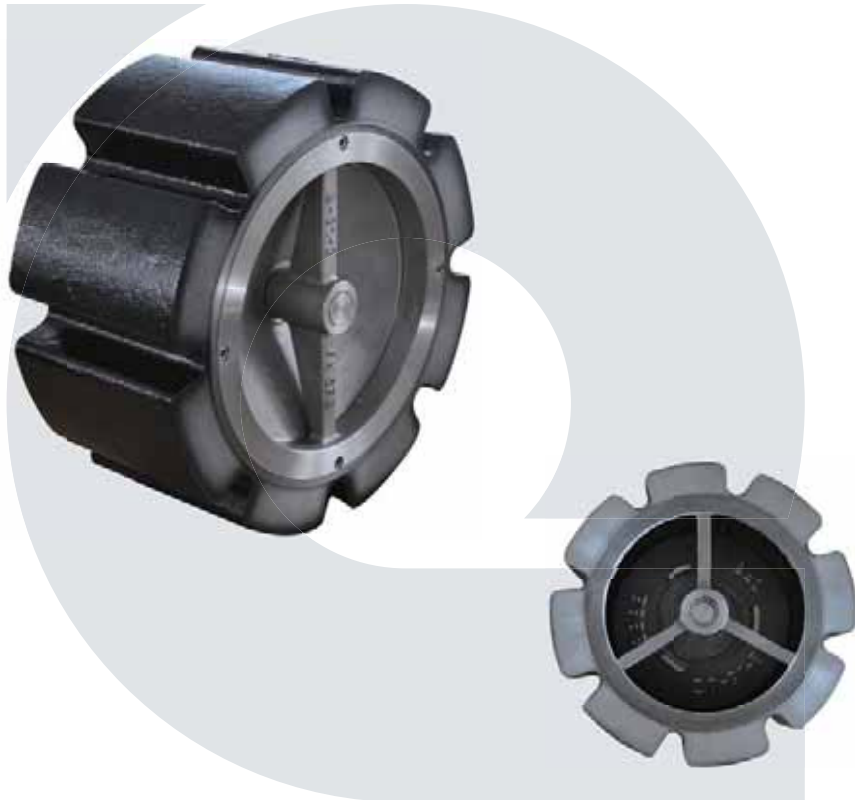


Wafer silent check valves

Fig.617 : Wafer



Coreline Fig.617 wafer silent check valves are designed to close before the pump stops completely. This prevents flow reversal, which eliminates water hammer and the surges associated with check valve closure.

Fully automatic, spring loaded and double guided, the valve opens as the pump starts, and closes just prior to flow reversal upon pump outage. Coreline Fig.617 wafer silent check valves are available for both metal seats and resilient seats, and resilient seat is highly recommended for potable water or drip tight application.

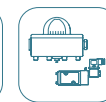
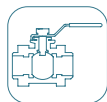
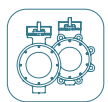


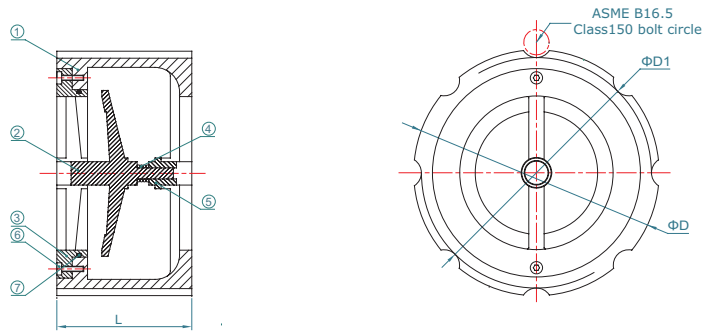
Design features

- Flexibility and low weight because of short face-to-face dimension
- Loaded with spring which helps to close the disc quickly with low water hammer pressure
- Hand lapped mating surface between seat and disc with excellent finish
- Fully guided disc at top and bottom to prevent binding and cocking
- Designed for a minimum open area equal to 110% of the pipe size
- Rubber seat sealing for optional provides bubble tight shut off
- Field serviceable without the need for special tools

Specifications

Connection:	Wafer
Nominal diameter:	DN50-DN300
Pressure rating:	ASME B16.5 CLASS150
Body:	Carbon steel, stainless steel
Disc:	CF8M, CF8
Seat:	Stainless steel, EPDM, NBR, FPM





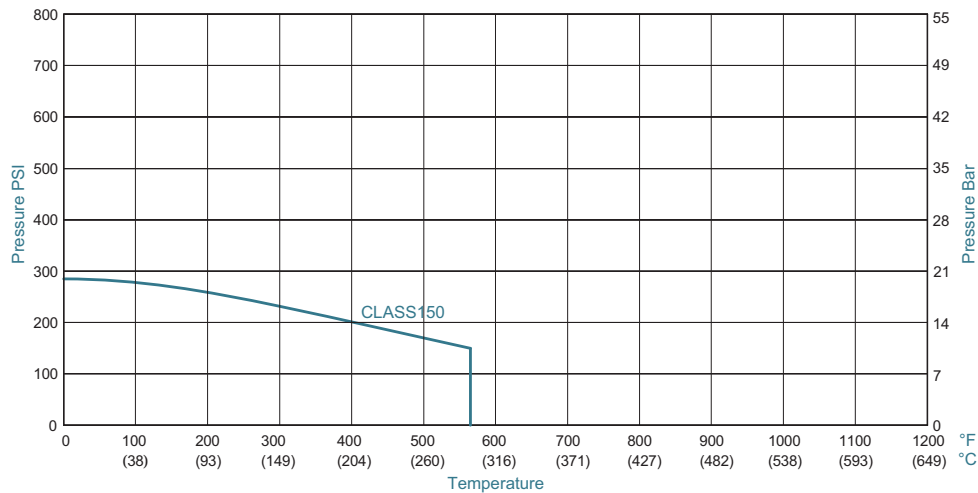
Dimensions

Size	Inch	L	D	D1	[kg]
DN50	2"	67	108	103	2.6
DN65	2½"	73	127	122	4
DN80	3"	80	146	134	4.9
DN100	4"	102	178	171	8.7
DN125	5"	118	213	191	11.5
DN150	6"	142	248	221	20.7
DN200	8"	165	343	276	43.7
DN250	10"	210	406	336	80.5
DN300	12"	285	489	403	149.5

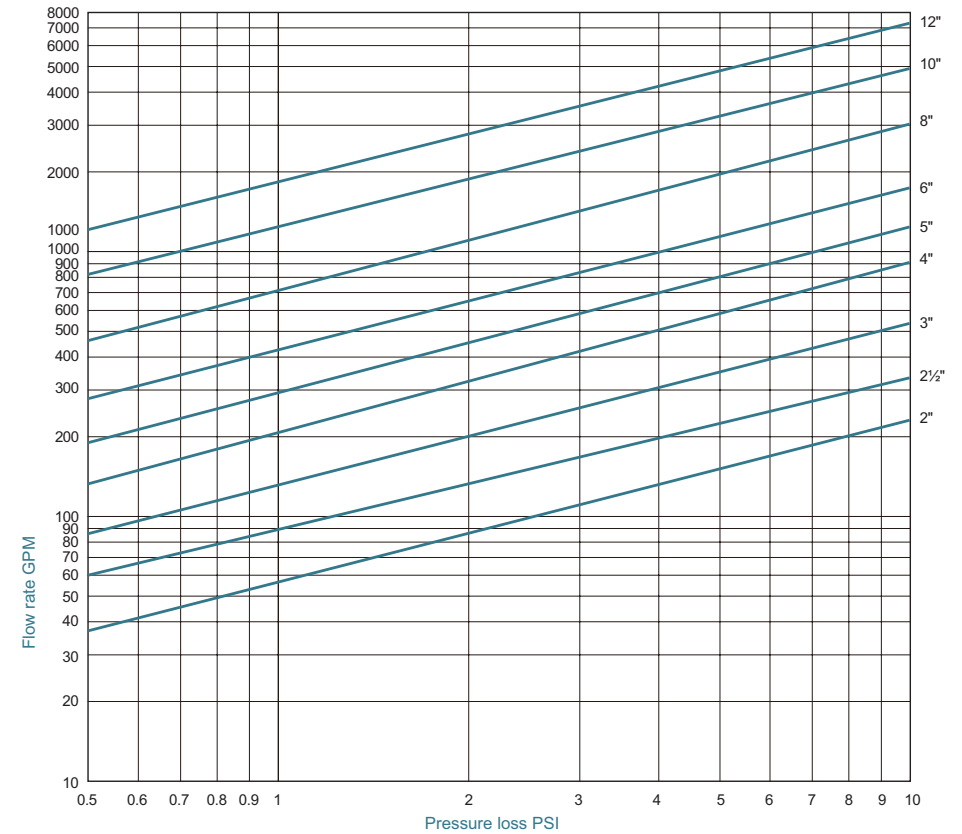
Part list and material specification

No.	Part name	Material	Specification
1	Body	Carbon steel	ASTM A216 WCB
		Stainless steel	ASTM A351 CF8M
2	Disc	Stainless steel	ASTM A351 CF8M ASTM A351 CF8
3	Seat	Stainless steel	ASTM A351 CF8M ASTM A351 CF8
		EPDM	-20 ~ +120
		NBR	-15 ~ +85
		FPM	-15 ~ +180
4	Spring	Stainless steel	AISI321, AISI304
5	Bushing	Stainless steel	AISI316, AISI304
6	Screw	Stainless steel	AISI316, AISI304
7	O ring	EPDM	-20 ~ +120
		NBR	-15 ~ +85
		FPM	-15 ~ +180

Pressure temperature curve



Pressure loss chart



This pressure loss chart is based on the flow clean water through Coreline Fig.617 wafer silent check valve at ambient temperature.

The check valve shall be installed minimum 5 pipe diameters from sources of turbulence.

Coreline

WUXI CORELINE VALVE CO., LTD.

The contents of this catalogue are confidential and proprietary to Coreline, we reserve the right to change the specifications without any notice.

Add: No.210 Xinyuan Road, Ehu Industrial Park, 214116 Wuxi, P.R. China
 Phone: +86 510 68870699 Fax: +86 510 80257770
 Http: // www.coreline.dk E-mail: mail@coreline-valve.cn