

Fig.560 CT-EX position switch box

Features

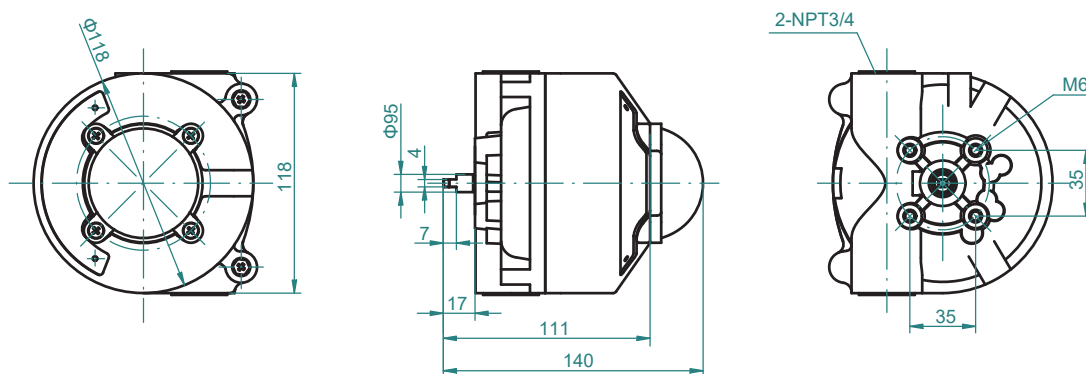
- Solid and compact design - Body in corrosion resistant and impact resistant aluminium die-casting with power coated.
- Explosion proof Exd II C T6 Gb Ex tD A21.
- Multi-point terminal strip, standard 8 points and enough strips for connection.
- Quick-set cam- Spring loaded splined cam. No need to adjust again after initial setting.
- Captive cover bolts - No worry to loose bolts while cover open.
- Easy mounting - NAMUR standard stainless steel shaft, ISO5211 bracket with stainless steel for optional.
- Visual position indicator, with non-visual indicator type is available on request.



Technical data

Model	Fig.560	
	Standard	Option
Weather proof	IP66	
Explosion proof	Exd II C T6 Gb Ex tD A21	
Temperature range	-25°C~+80°C	
Cable entry	2×3/4NPT	PT3/4, PF3/4
Terminal strips	8	9~24
Position indicator	0~90°	0~180°
Switches	Open-Yellow; Close-Red	
	Mechanical, proximity, magnet	
Potentiometer	1KΩ (0~5K Ω, 0~10K Ω)	
Current feedback	4~20mA (20~4mA)	

Dimensions



Brackets

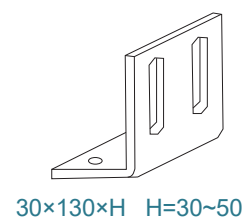
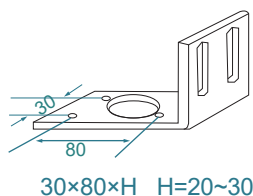


Fig.560 CT-EX position switch box

Connection power

- When connecting power, please make sure to use flameproof proven and/or cable gland for explosion environment.
- The power must be cut off if cover must be opened for any case. Thereafter please wait for at least 30 seconds before losing the bolts.
- For unused power connectors, please make sure to use blind plugs which is explosion proof certified.
- When wiring, make sure the polarities are correct. Do not use too much force when pull the cable to make sure it will not peel off.
- The user must follow other explosion proof procedures and safety precautions to ground.

Wiring

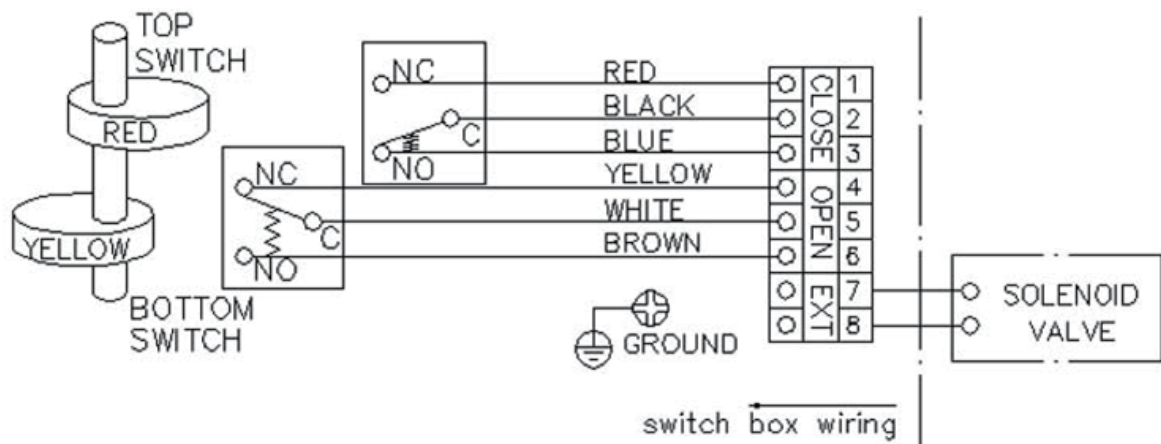


Fig.1 Mechanical switch (2xSPDT)

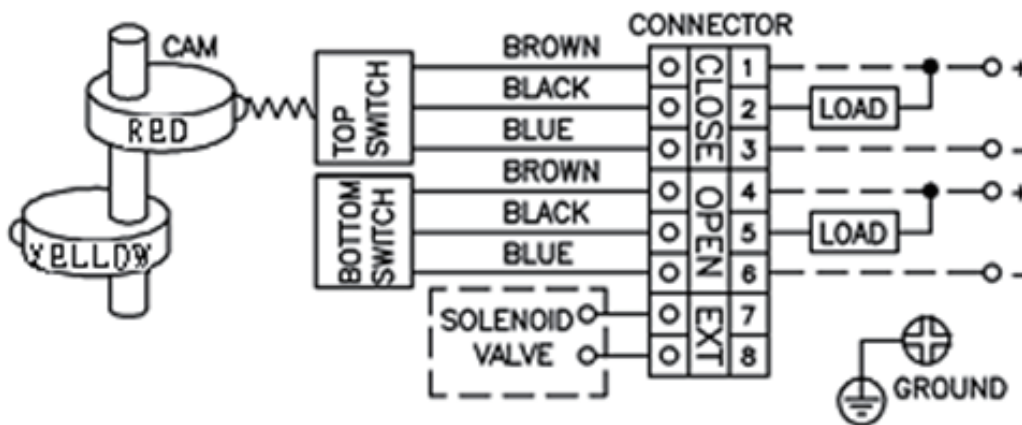


Fig.2 Proximity sensor type (NPN)

Coreline

The contents of this catalogue are confidential and proprietary to Coreline, we reserve the right to change the specifications without any notice.

WUXI CORELINE VALVE CO., LTD.

Add: No.210 Xinyuan Road, Ehu Industrial Park, 214116 Wuxi, P.R. China

Phone: +86 510 88525336

Http: // www.coreline.dk

E-mail : mail@coreline.cn