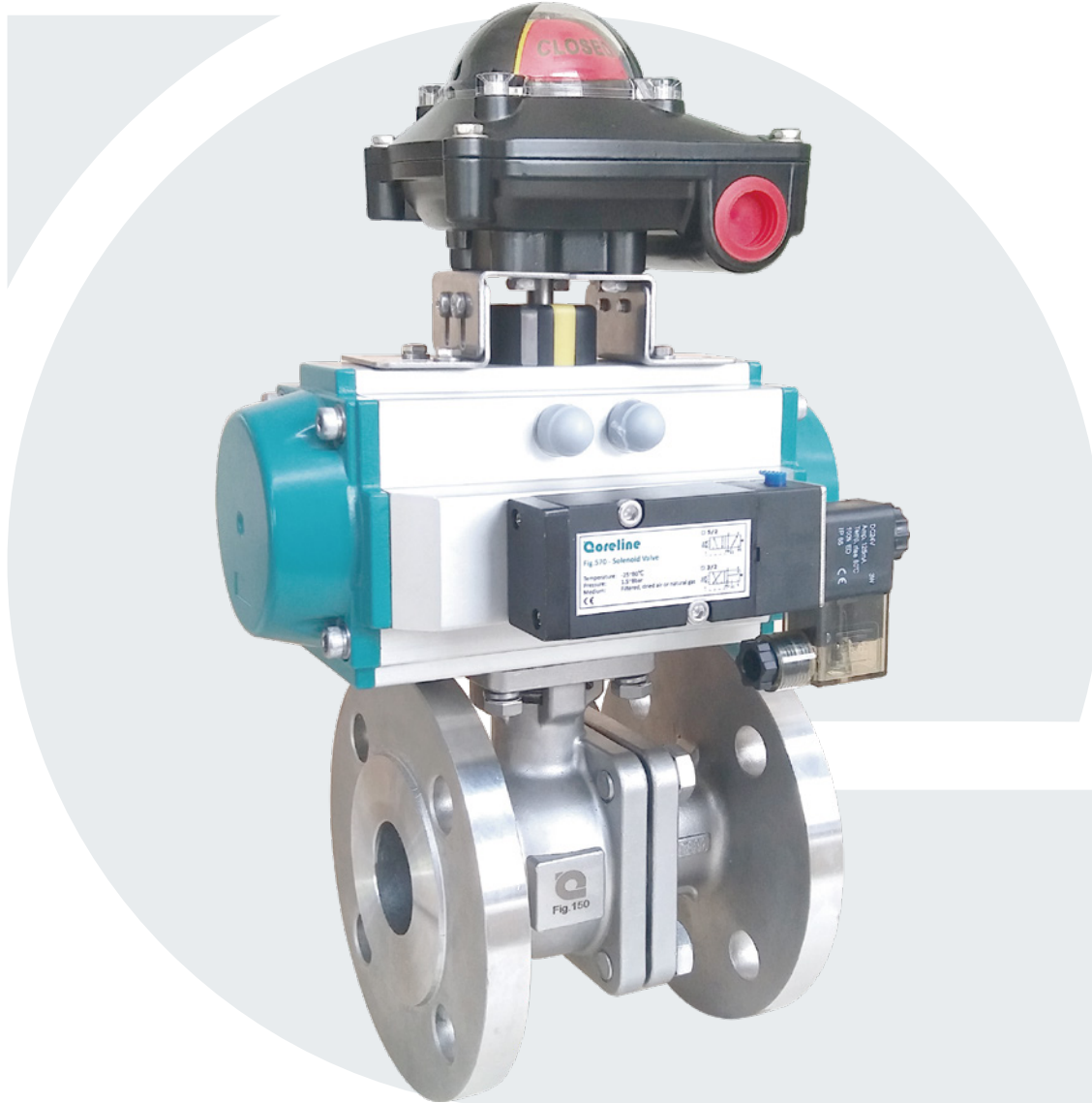
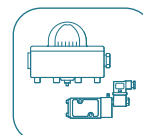
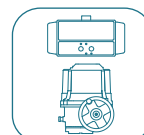
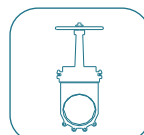
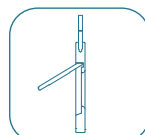
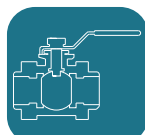
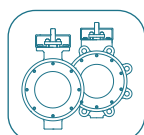
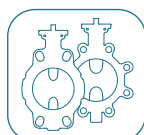


## 2PC Flanged ball valve

Fig.150



[www.coreline.dk](http://www.coreline.dk)



# Geeral information

## Features

- **Wax casting** with excellent surface finish.
- Full bore for better Kv value.
- **Anti-static devices** for ball - stem - body.
- **Solid ball** for all sizes up to DN200.
- Blow-out proof stem.
- **Pressure relief hole** in ball slot.
- ISO5211 direct mounting pad for easy automation.



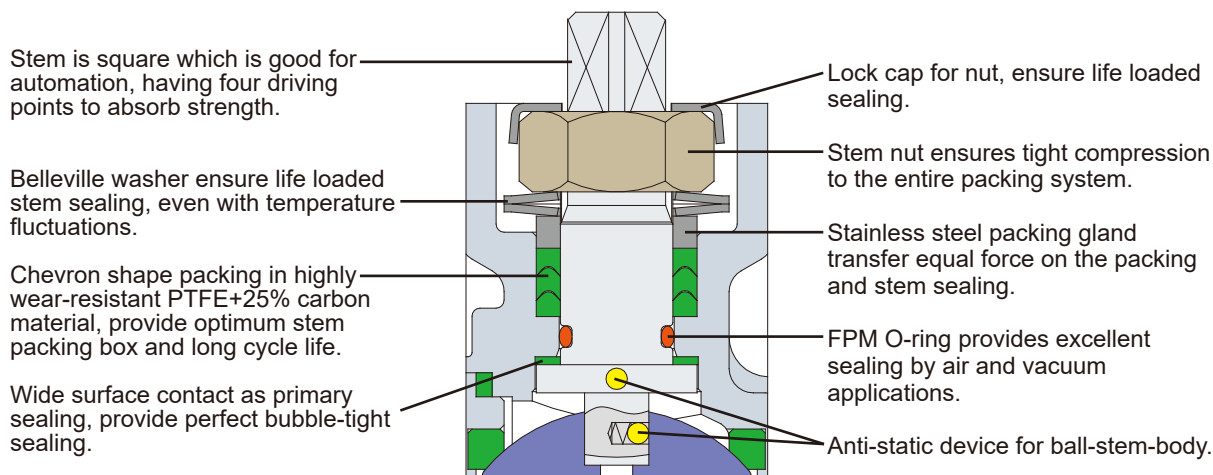
## Specifications

Connection:	PN16/40 - DIN EN1092-1 ANSI150 - ASME B16.5
Size range:	DN15-DN200
Pressure rating:	PN16/40, ANSI150
Face to face:	PN16/40 - EN558 series 27 ANSI150 - ASME B16.10
Body:	Carbon steel, stainless steel
Seat:	PTFE with 25% carbon.

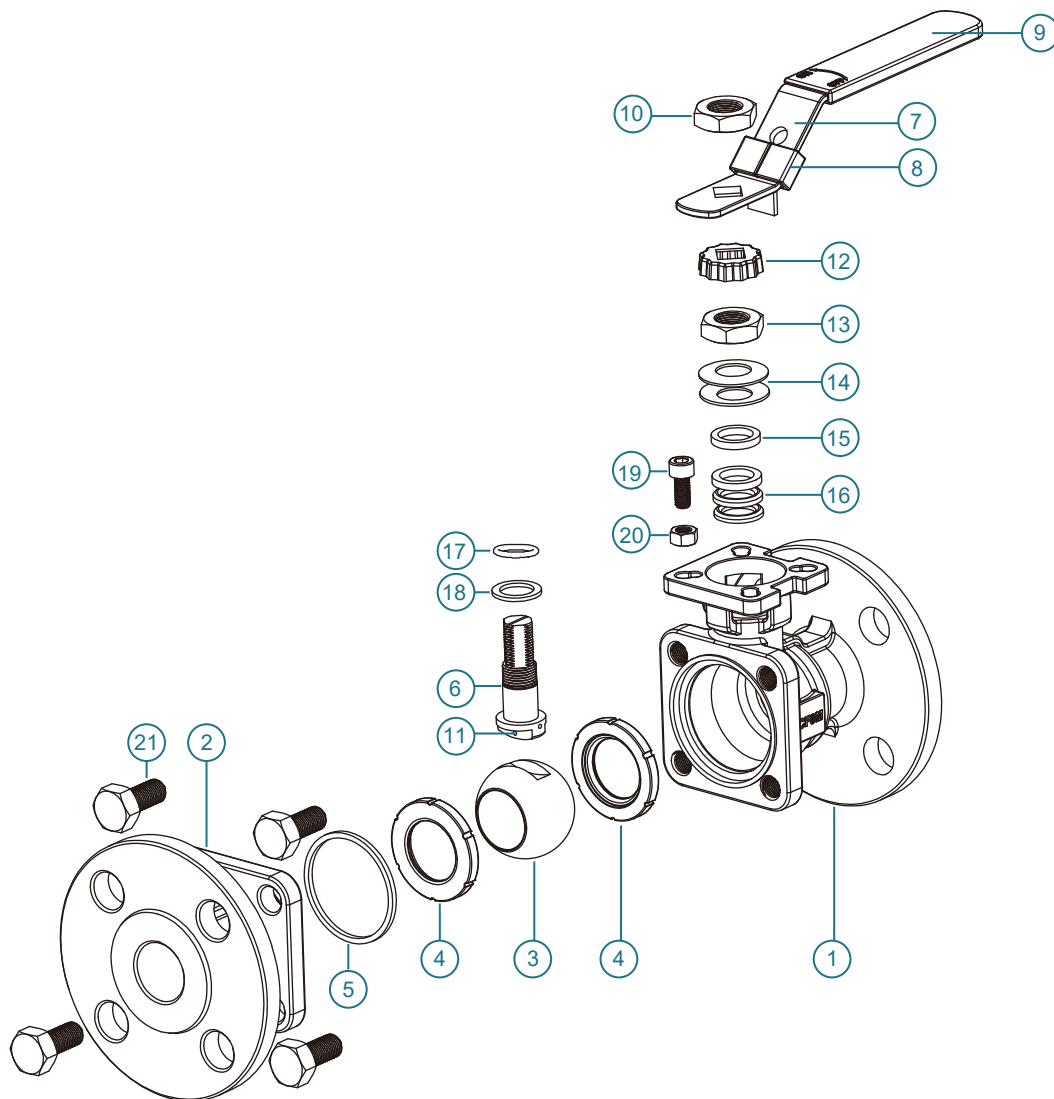
\* Other materials are available on request.



## Stem sealing system



# Material part list DN15-DN100

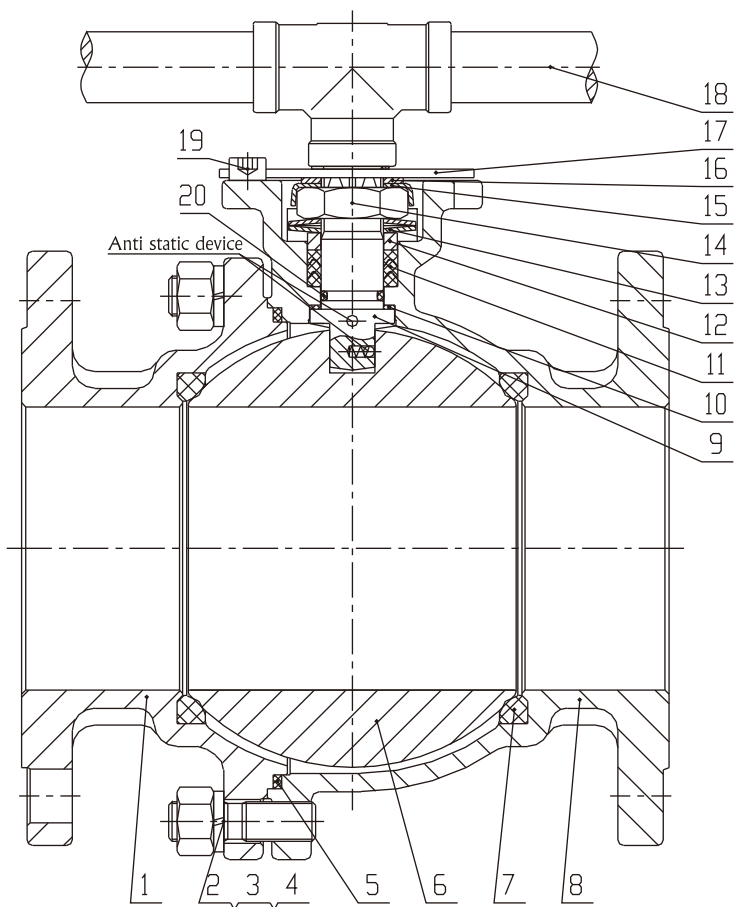


## Material part list

No.	Part name	Material	No.	Part name	Material
1	Body	A351 CF8M	9	Handle sleeve	Vinyl
		A351 CF8	10	Nut	SS304
		A216 WCB	11	Anti-static device	SS316
2	Body cap	A351 CF8M	12	Lock cap	SS304
		A351 CF8	13	Nut	SS304
		A216 WCB	14	Belleville washer	SS301
3	Ball	SS316	15	Gland	SS304
		SS304	16	V-ring packing	PTFE+25% carbon
4	Seat	PTFE+25% carbon	17	O-ring	FPM
5	Gasket	PTFE+25% carbon	18	Stem sealing	PTFE
6	Stem	SS316	19	Stop bolt	SS304
		SS304	20	Nut	SS304
7	Handle	SS304	21	Body bolt	SS304
8	Locking device	SS304			

\*) Please contact Coreline for other materials.

# Material part list DN125-DN200

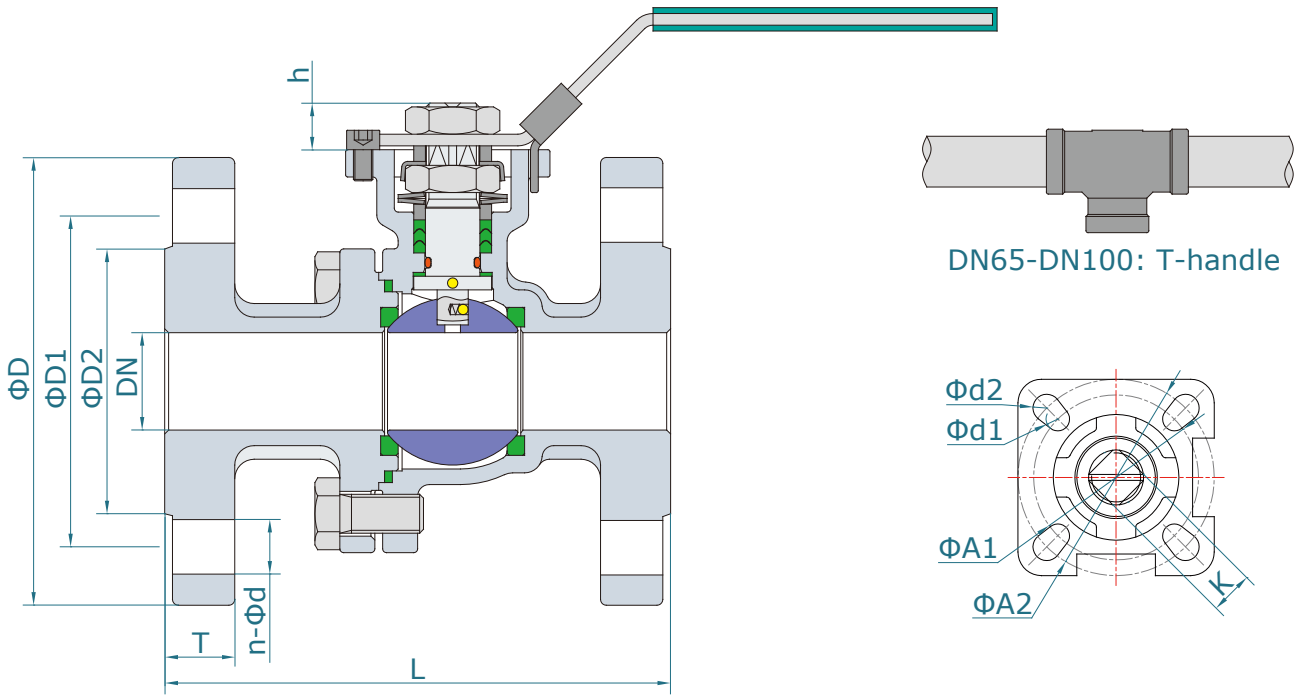


## Material part list

No.	Part name	Material	No.	Part name	Material
1	Cap	A351 CF8M	9	Stem	SS316
		A351 CF8			SS304
		A216 WCB			PTFE+25%C
2	Bolt	SS304	10	Stem sealing	PTFE
3	Washer	SS304			TFM1600
4	Nut	SS304			PTFE+25%C
5	Body gasket	PTFE+25%C	11	V-ring packing	PTFE
		PTFE			TFM1600
		TFM1600			SS304
6	Ball	SS316	12	Packing gland	SS304
		SS304	13	Belleville washer	SS304
7	Seat	PTFE+25%C	14	Nut	SS304
		PTFE	15	Stop lock cap	SS304
		TFM1600	16	Washer	SS304
8	Body	A351 CF8M	17	Stopper	SS304
		A351 CF8	18	Handle	SS304
		A216 WCB	19	Stop bolt	SS304
			20	O-ring	FPM

\*) Please contact Coreline for other materials.

# Dimensions DN15-DN100



## Dimensions

INCH	DN	PN16/40	PN16					PN40					ANSI150					
		L	D	D1	D2	T	n- $\phi$ d	D	D1	D2	T	n- $\phi$ d	L	D	D1	D2	T	n- $\phi$ d
1/2"	15	115	-	-	-	-	-	95	65	45	16	4- $\phi$ 14	108	90	60.5	35	10	4-16
3/4"	20	120	-	-	-	-	-	105	75	58	18	4- $\phi$ 14	117	100	70	43	11	4-16
1"	25	125	-	-	-	-	-	115	85	68	18	4- $\phi$ 14	127	110	79.5	51	12	4-16
1 1/4"	32	130	-	-	-	-	-	140	100	78	18	4- $\phi$ 18	140	115	89	63.5	13	4-16
1 1/2"	40	140	-	-	-	-	-	150	110	85	18	4- $\phi$ 18	165	125	98.5	73	15	4-16
2"	50	150	-	-	-	-	-	165	125	102	20	4- $\phi$ 18	178	150	120.5	92	16	4-19
2 1/2"	65	170	185	145	122	18	4- $\phi$ 18	185	145	122	22	8- $\phi$ 18	190	180	140	105	18	4-19
3"	80	180	200	160	138	20	8- $\phi$ 18	200	160	138	24	8- $\phi$ 18	203	190	152.5	127	19	4-19
4"	100	190	220	180	158	20	8- $\phi$ 18	235	190	162	24	8- $\phi$ 22	229	230	190.5	157	24	8-19

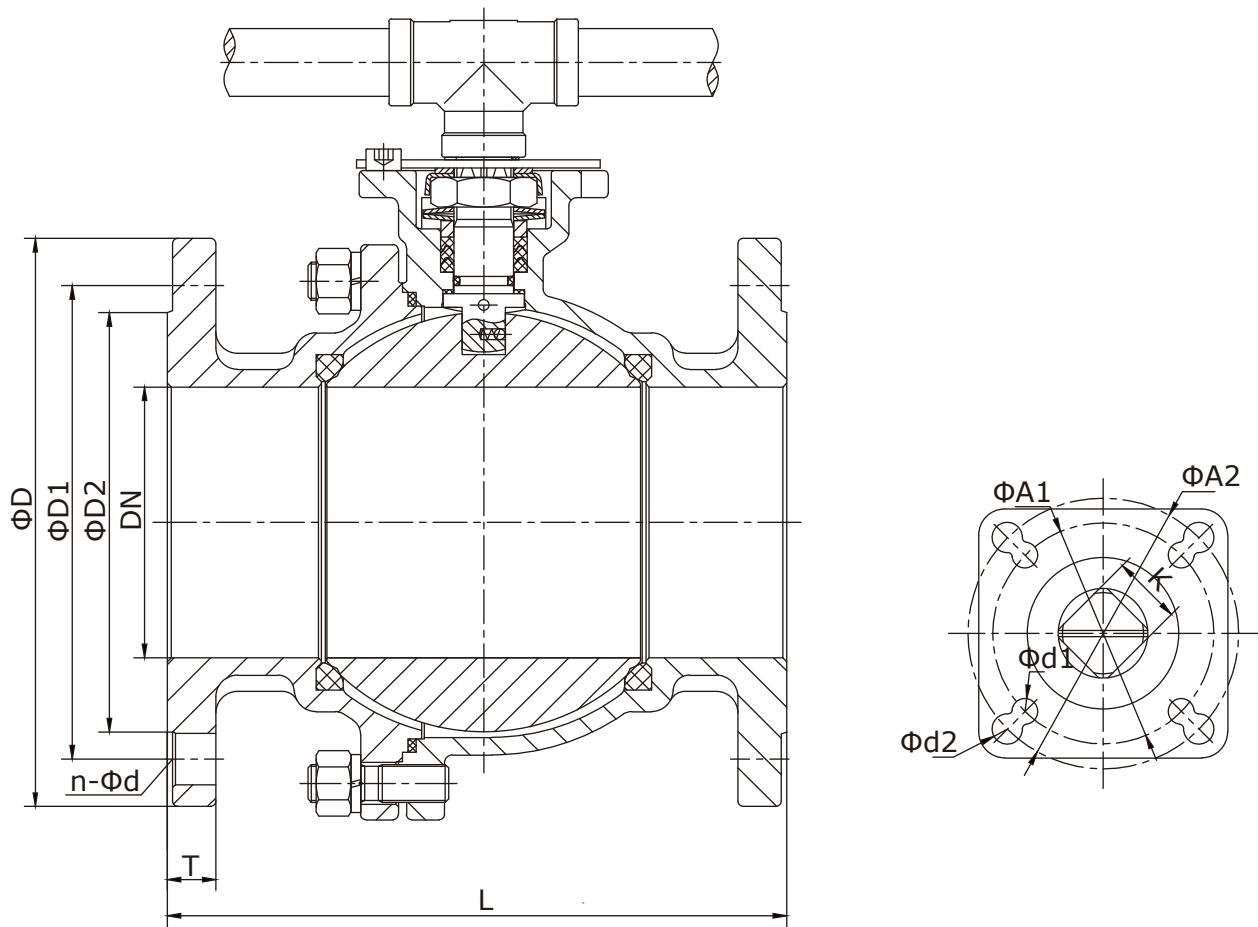
\*) DN15-DN50: PN16 and PN40 shares the same dimensions.

## Top flange connection

SIZE		PN16							PN40							ANSI150						
INCH	DN	ISO5211	A2	d2	A1	d1	K	h	ISO5211	A2	d2	A1	d1	K	h	ISO5211	A2	d2	A1	d1	K	h
1/2"	15	-	-	-	-	-	-	-	F03+F04	36	6	42	6	9	10	F03+F04	36	6	42	6	9	10
3/4"	20	-	-	-	-	-	-	-	F03+F04	36	6	42	6	9	10	F03+F04	36	6	42	6	9	10
1"	25	-	-	-	-	-	-	-	F04+F05	42	7	50	6	11	12	F04+F05	42	7	50	6	11	12
1 1/4"	32	-	-	-	-	-	-	-	F04+F05	42	7	50	6	11	12	F04+F05	42	7	50	6	11	12
1 1/2"	40	-	-	-	-	-	-	-	F05+F07	50	9	70	7	14	15	F05+F07	50	9	70	7	14	15
2"	50	-	-	-	-	-	-	-	F05+F07	50	9	70	7	14	15	F05+F07	50	9	70	7	14	15
2 1/2"	65	F05+F07	50	9	70	7	14	15	F07+F10	70	11	102	9	17	18	F05+F07	50	9	70	7	14	15
3"	80	F07+F10	70	11	102	9	17	18	F07+F10	70	11	102	9	17	18	F07+F10	70	11	102	9	17	18
4"	100	F07+F10	70	11	102	9	17	18	F10+F12	102	14	125	12	22	23	F07+F10	70	11	102	9	17	18

\*) DN15-DN50: PN16 and PN40 shares the same dimensions.

# Dimensions DN125-DN200



## Dimensions

SIZE		PN16						PN40						ANSI150					
INCH	DN	L	D	D1	D2	T	n-φd	L	D	D1	D2	T	n-φd	L	D	D1	D2	T	n-φd
5"	125	325	250	210	188	22	8-φ18	325	270	220	188	26	8-φ26	356	255	216	186	24	8-φ23
6"	150	350	285	240	212	22	8-φ22	350	300	250	218	28	8-φ26	394	280	241.5	216	26	8-φ23
8"	200	400	340	295	268	24	12-φ22	400	375	320	285	34	12-φ30	457	345	298.5	267	29	8-φ23

## Top flange connection

SIZE		PN16								PN40								ANSI150							
INCH	DN	ISO5211	A2	d2	A1	d1	K	h	ISO5211	A2	d2	A1	d1	K	h	ISO5211	A2	d2	A1	d1	K	h			
5"	125	F10+F12	125	14	102	12	22	23	F12+F14	125	18	102	14	27	28	F10+F12	125	14	102	12	22	23			
6"	150	F10+F12	125	14	102	12	27	28	F12+F14	125	18	102	14	27	28	F10+F12	125	14	102	12	27	27			
8"	200	F12+F14	140	18	125	14	27	28	F14+F16	140	22	125	18	36	37	F12+F14	125	14	102	12	27	27			

# Technical data

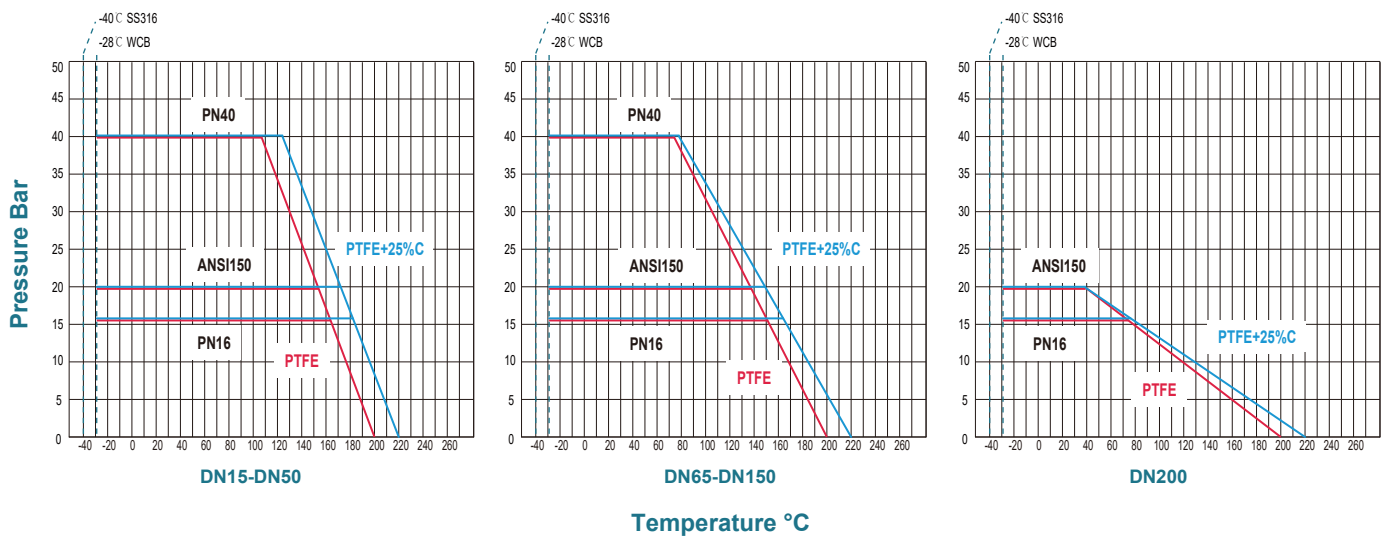
## Technical data

SIZE		Kv - 90° [m³/h]	Breakaway Torque [Nm]	Weight [kg]	Pressure
DN	INCH				
15	1/2"	25	7	2.3	PN16/ANSI150
20	3/4"	45	7	3	
25	1"	75	12	3.9	
32	1 1/4"	130	20	5.6	
40	1 1/2"	220	39	7	
50	2"	380	43	9.5	
65	2 1/2"	600	70	12	
80	3"	850	80	18	
100	4"	1700	150	23.5	
125	5"	2800	350	52	
150	6"	3850	450	71	
200	8"	7300	600	123	
65	2 1/2"	600	78	13.5	PN40
80	3"	850	90	20	
100	4"	1700	170	28	
125	5"	2800	420	58	
150	6"	3850	550	80	
200	8"	7300	750	148	

**Remark:**

- 1) Torque value is based on PTFE+25% carbon seat WITHOUT safety. Please add a safety factor of minimum 1.3 for actuator sizing. (Test: 0bar differential pressure, ambient temperature, non-lubricating).
- 2) Kv-value rated flow coefficients (m³/h at 1 bar ΔP).
- 3) Estimated weight.

## Pressure temperature curve



**Remark:**

The pressure-temperature curve above represents the theoretical performance of PTFE and PTFE+25% carbon materials. However, actual pipeline conditions may impact the valve's overall performance. Please evaluate and consider the specific application conditions comprehensively.

# Actuators and accessories

## Pneumatic actuators

CE Ex SIL



<b>Type:</b>	Fig.540 double acting, Fig.541 spring return
<b>Torque:</b>	Max.12992Nm
<b>Operating medium:</b>	Dry or lubricated air, inert/non-corrosive gases
<b>Air supply pressure:</b>	2.5bar-8bar
<b>Travel stop:</b>	0°- 90°, adjustable +4° to -4°
<b>Mounting details:</b>	ISO 5211, Namur, VDI/VDE 3845
<b>Body material:</b>	Hard anodized aluminum alloy

## Pneumatic accessories



<b>Position switch box:</b>	Fig.561/561M standard type Fig.560/560B/560C Explosion-proof type Ex marking: II 2G Ex db IIC T6 Gb, II 2D Ex tb IIIC T80 C Db
<b>Solenoid valve:</b>	Fig.570 standard type Fig.576 Explosion-proof type Ex marking: II 2G Ex db IIC T6 Gb
<b>Positioner:</b>	Fig.585 Intelligent EP type Fig.586 Electrical-Pneumatic type
<b>Air regulator:</b>	Air regulator Filter/Regulator-Lubricator (FR.L) Filter-Regulator-Lubricator (F.R.L)

## Electrical actuators

CE Ex



<b>Type:</b>	Fig.550 standard Fig.550S spring return type
<b>Torque:</b>	10Nm and up
<b>Ambient temperature:</b>	-25℃~+65℃
<b>Function:</b>	ON/OFF, Modulating
<b>Body material:</b>	Hard anodized aluminum alloy

# Coreline

**CORELINE LTD.**

The contents of this catalogue are confidential and proprietary to Coreline, we reserve the right to change the specifications without any notice.

Add: No.4 Wangjiang Road, Muqiao Town, Zhengpugang New District, 238200 Hexian, Ma'anshan City, Anhui Province, China

Http: // www.coreline.dk

E-mail : mail@coreline.cn